



Where others see obstacles, we build solutions

Software Development, Digital
Innovation & Technology Solutions.

Who we are

We combine technical expertise with close collaboration to turn ideas into scalable software. From enterprise systems to custom apps, we build solutions that solve real challenges and support growth of your business.

Headquarters: The Netherlands

Delivery team: Serbia

Focus: Digital solutions across industries

With over 15 years of experience, we've partnered with governments, corporations, and startups to build technology that makes the impact.

Find out more on www.elanwave.com



ElanWave Difference

Expert execution. Clear and friendly communication. Scalable results.

We pride ourselves on overcoming the typical problems associated with outsourcing.

1. Knowledge-driven and proven expertise

We solve complex problems with years of hands-on experience across sectors and industries. You can rely on us to make the right calls.

3. Collaborative approach

You'll collaborate with a dedicated team that bridges cultural gaps and time zones, supported by a Project Manager who keeps communication clear and updates seamless.

5. Built to scale

From legacy modernization to new platforms, we help you grow without friction.

2. Security by design

We embed security into every stage of development to protect your data and IP. Your sensitive data is our priority.

4. Smart delivery, fair cost

We deliver high-quality solutions without bloated budgets or prestige pricing. Time and cost-effective.

6. Microsoft Partner

A Microsoft Partner with certified expertise in Microsoft and other technologies, we've built a reputation for leading in niche markets through tailored/custom solutions.



What we deliver

ElanWave is your trusted strategic partner in digital transformation. With us you can automate processes, scale efficiently, and drive growth. We design tailored solutions using Microsoft Dynamics 365, Power Platform, Azure, AWS, OutSystems, Umbraco, and more.

Business Apps

Custom implementations of Microsoft Dynamics 365 for customer service, finance, sales, supply chain management, and more.

Workflow automation

Automated workflows and integrations built with Power Platform to streamline processes and boost efficiency.

Business intelligence & reporting

Transform raw data into clear, actionable insights with interactive dashboards and reports using Power BI.

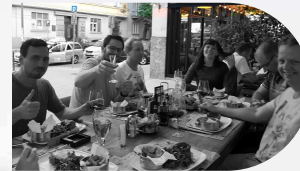
Cloud Infrastructure

Scalable, secure cloud solutions on Azure and AWS.

Custom & Low-Code development

From OutSystems and Power Platform to full-stack web development and fully custom builds. We deliver fast, flexible apps tailored to your business needs.

You would be in good company



Garamsy's
Tas agreed

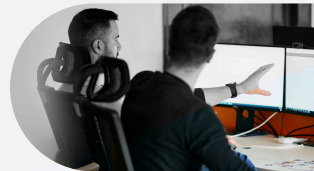


Atos

THE IT Solutions

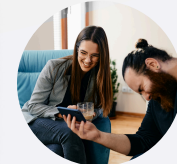


[...]
**Human
Digital**



PERFETTI
van Melle

**ANCOFER
WALDRAM**
STEEL PLATES



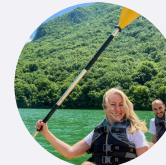
aariini



WORKRATE

uxbee

aptum



ProCredit Bank



SYNERGI

 Ministerie van Defensie

WIONIQ

Your Partner in Tech Transformation

It's a great partnership!

"The collaboration with ElanWave is very pleasant. It's informal, direct, and open.

The culture of the company is very friendly and the work they provide is of high standards. They join your team and work together. It is a great partnership!"

Theo de Wolf
UxBee

I have collaborated with ElanWave even before it was founded, so since 2013 we started working on a project together.

"Our collaboration is a partnership, it's not a supply – we are working on projects like a team."

Mark Wijnen
Garansys

Working with Elanwave has been an absolute pleasure.

"Their flexibility in adapting to our specific needs, combined with a practical, no-nonsense approach, ensured that every phase of our project was executed seamlessly. Elanwave's goal-oriented mindset kept us focused on delivering tangible results, and their dedication to achieving our objectives was truly commendable. We highly recommend them for their professionalism and commitment to excellence."

Vasil Gocevski
Synergi

My experience as both a US based seasoned entrepreneur and CEO working with ElanWave has been nothing but outstanding.

From the detailed planning stages through to execution the team reflects an atmosphere that is dedicated to the client.

"From the first phone call through design and beyond they work like they are part of our company versus just being an outside contractor. They make my needs theirs and that is rare in this digital age we live in. I'm looking forward to working with the team at ElanWave in the future."

Will Ashcroft
Cingo Global

Our partnership with ElanWave is good for us, for our clients, and I hope for ElanWave also.

Rob Wessels
Bergler

The sweet spot



We offer the perfect balance: structured, skilled and easy to work with. Big enough to deliver, small enough to care.

Freelancers

Benefits:

- + \$
- + Hire on-demand
- + No Commitment

Disadvantages:

- Quality risk
- Reliability and accountability issues
- Lack of long-term commitment
- Intellectual property concerns
- Communication & Security challenges
- Legal and compliance issues



- + Senior Experts
- + Scalability
- + Faster Time-to-Market
- + Access to new Technology
- + Lower costs
- + High Quality solutions

Enterprises

Benefits:

- + Senior Domain Experts
- + Scalability, Faster Time-to-Market
- + Access to new Technology

Disadvantages:

- \$\$\$\$\$\$
- Dependency on External Partner
- Hidden Costs
- Loss of Control
- Contractual Disputes
- Reliance on 3rd-party Infrastructure



Technologies

We leverage a powerful tech stack — including Microsoft Dynamics 365, Power Platform, Azure, AWS, OutSystems, .NET, SharePoint, React, and more — to build custom, high-performance solutions. As a Microsoft Partner, we ensure seamless integration, security, and scalability tailored to your business needs. Whether cloud, low-code, or enterprise applications, we turn your vision into reality.



POWER PLATFORM

 Power Automate Power Apps Power BI Power Pages Power Virtual Agents Dataverse Data connector

MOBILE

 iOS Android Flutter

CMS/DMS

 Umbraco SharePoint Sitecore

DATABASE

 Cosmos DB Firebase SQL Server Mongo DB


CLOUD

 Microsoft Azure MS 365 Amazon Web Services

DYNAMICS 365

 Sales Finance Customer Service Project operation Field Service

UX/UI

 Figma Adobe Illustrator Adobe Photoshop Bootstrap Fluent UI Material Design

OUTSYSTEMS

 OutSystems

WEB

 React PHP ASP.NET Python Next JS Vue JS CSS Blazor

Domain expertise

At ElanWave, our domain expertise empowers us to thrive in various industries. Yet, our greatest passion lies in collaborating within specific sectors, enabling us to deliver impactful solutions.

fintech

retail



manufacturing

supply chain

government

media

telco



insurtech

education

real estate

hospitality

healthcare



**Your vision,
our expertise.
Let's inovate
together!**

A background image showing three people in an office setting. A man in the foreground is smiling, looking towards the right. Behind him, a woman and another man are also smiling and looking in the same direction. They appear to be in a collaborative meeting.

Which business model suits you?

Each project has unique factors: budgets, deadlines, challenges, and requirements. Recognizing this, we reject a one-size-fits-all software development approach. Instead, we provide two tailored business models to align with your specific goals and ambitions:

01

Fixed Price

With a fixed scope, budget, and timeline, this model provides certainty and peace of mind. You set the requirements upfront, and we commit to delivering the project within those parameters

02

Time & Material

This model offers greater control, flexibility, and the opportunity for active participation in candidate selection. With no rigid processes or fixed end dates, it's easier to scale up or down as your business needs evolve.

Service Level Agreement (SLA)

No matter which business model you choose, we ensure transparency and accountability through a comprehensive Service Level Agreement. This agreement outlines our commitment to service quality, timelines, communication standards, and deliverables, giving you confidence and control throughout the project lifecycle.



Contact Us

HQ – The Netherlands

+ 31(0)6 81 255 70

Koolstraat 17, 5708 ZM Helmond

The Netherlands

info@elanwave.com

E&D – Serbia

+381(0)21 30 00 680

+381(0)64 648 90 75

Rumenacka 1, 21000 Novi Sad

Serbia

info@elanwave.com